

# Newbald Parish Council Newsletter



## A BIG THANK YOU TO THE VILLAGE HALL COMMITTEE

### WELCOME BACK COUNCILLOR

NPC was pleased to welcome Councillor Ed Openshaw back onto the Parish Council. Cllr. Openshaw has also resumed his role carrying out the bi-annual safety inspections of The Green, The Mires, the cemetery and the churchyard. He is also still on the Village Hall Management Committee. Cllr. Openshaw is a very committed Council Member. We thank him for the considerable voluntary time he gives in order to support and further the interests of the village.

### FLY TIPPING NIGHTMARE

There have been a large number of fly tipping incidents in recent months in and around Newbald. These have ranged from the dumping of commercial waste at the side of the road, to the tipping of garden debris in the heart of the village, as well as unsightly rubbish being left on private land.

We appeal for your help in combating this anti-social behaviour. Fly tipping can be reported directly to East Riding of Yorkshire Council on their website. Alternatively let the Parish Council know, especially if you are aware of particular companies or individuals who flout the law so we can take some action.

### CHURCHYARD UPKEEP - WE NEED YOUR HELP - THANK YOU!

NPC has committed to replacing the tarmac that surrounds the Church to make it safer. It is unfortunately past the point where it can be repaired.

In addition, NPC has recently

Newbald Parish Council would like to salute all the hard work of the Village Hall Committee. They have worked tirelessly and totally voluntarily to facilitate the transformation of the Village Hall from a tired, crumbling 1960s structure to a modern, versatile community facility. If you have not yet visited the Hall, we highly recommend it, so you can appreciate how different it feels and the extra space



**NVH Committee:** Standing - John Tomlinson, Geoff Lewis, Ed Openshaw, James Wright Seated - Sarah Milner, Deborah Tomlinson, Jenni Howard

### MIRES, MOLES & MAINTENANCE

NPC has organised for the Yorkshire Wildlife Trust (YWT) to carry out the annual clearance of the beck and the surrounding area on The Mires. This is specialist work as the cutting back has to be done in such a way that the habitat of our native water voles is preserved. By law, we must do everything we can to protect this endangered species.

The good news is that the YWT confirmed that the Mires showed signs of water vole activity. This means we can lay to bed our fears that the 2017 oil spill may have adversely impacted Newbald's water vole population. The YWT also removed the invasive non native Balsam and will tackle its roots in the Autumn to stop it spreading further. Attention has now turned to the far bank of The Mires. NPC is seeking permission from East Riding of Yorkshire Council to remove a dead tree and has applied for a grant to plant four new native Common Alders.

commissioned a tree survey. This identified various works that need to be undertaken to keep the trees safe, protect the stonework of the church and stop branches from obstructing people on the paths and passing

vehicles. This work will be carried out in the Autumn. Such work is expensive. The churchyard also needs more general maintenance and weeding. NPC would welcome any volunteers that might be

available. Not only has the Committee been dedicated to complex fundraising, planning and design work, it has already established a successful programme of theatre and live music events. It is clear that, with the addition of the new community room, this will only be the tip of the iceberg for the Hall. The Parish Council looks forward to seeing the Hall being used for all manner of community events and occasions, not only by Newbald residents, but also people from the surrounding area. For more information about events and developments at the Hall, please see later in this newsletter. Thank you to the Committee for your years of dedication to this project.

### SPEEDING PLEA

We continue to receive many complaints about cars and lorries speeding through our village. Unfortunately we fear that this is an accident waiting to happen. NPC continues to liaise with East Riding Council to see what affordable measures we could put in place to combat this. We are aware that any changes need to be in keeping with the village. Please watch your speed when driving through the village and if you notice any company vehicles breaking the limit, let NPC know.

interested in helping to keep the grounds of our grade 1 listed building neat & tidy. Even if you can only offer a small amount of time, please contact Rev. Bushby (Cllr) on 07483 860074. [michaelbushby@newbald.com](mailto:michaelbushby@newbald.com).

## COULD YOU BE A COMMUNITY FIRST RESPONDER?



We all hope we never need to call for an Ambulance in an emergency, but if we do, everyone wants the fastest possible response.

Generally, an Ambulance crew will be first on the scene to assist you with your emergency.

On other occasions, a Volunteer Community First

Responder (CFR) will reach you first, if the CFR is the nearest available person to the patient. The CFR will support the patient until an ambulance crew arrives.

We are fortunate to have a team of three local CFRs nearby (in South Cave and North Cave), who give up some of their time, entirely voluntarily, to be trained by Yorkshire Ambulance Service (YAS) and to attend certain emergencies, including cardiac arrests, heart attacks, chest pains, strokes, breathing and asthma problems, diabetic emergencies, seizures, choking, allergic reactions, and falls.

The CFRs carry a defibrillator, an oxygen supply and other equipment to provide initial basic life support to a patient. They are trained to carry out on-the-scene assessment of the patient and record information to pass over to the ambulance crew on their arrival.

The three CFRs primarily cover South and North Cave, but also travel to Newbald and numerous other neighbouring communities, including Newport, Gilberdyke, Hotham, and Little Weighton, if required. They attend incidents in people's homes, workplaces, schools, at shops, restaurants, hotels, care homes, and, on a number of occasions, in public places.

"Vitality, where we are close by, we can often be on the scene within minutes" said one of the CFRs, "and patients or relatives often compliment us on our response time. Once we are on scene, as well as providing initial support and gathering information about the patient, we are a source of reassurance for the patient that we are with them and that we can support them if their condition deteriorates".

CFRs need not be clinicians by profession, but are rigorously trained and regularly up-skilled. One of the key attributes though is the CFRs' people skills, where, without exception, they are compassionate, caring, competent, and calm under pressure. Being a CFR is a wonderful opportunity to give something tangible back to the community.

**YAS are always keen to hear from potential new recruits, for this voluntary activity. If this is something that interests you, there is much more detail available to view on [www.newbald.com](http://www.newbald.com).**

## NYPP COOKERY CLUB SUCCESS

The Cookery club is going strong after receiving a recent grant to help with running costs. We have been fully booked all year with places accommodating 36 children in total. We have cooked dishes from countries as far afield as Africa, Japan and



Mexico! The club is taking a break over summer and starting again on Wednesdays (11/9) for the first term from 5-8pm. £25 for a 5 week course, ages 7 upwards contact Helen Townend on 07973834475 to book. Our next project is to

upgrade some aspects of our kitchen so we are fundraising and applying for grants for this at the moment.

Other dates for your diaries include our annual Apple Festival on **Sunday 20th October** and the Christmas Fair on **Sunday 24th November**. We are planning some one off advanced cookery sessions aimed at older children and an afternoon tea organised by the youth club for the Newbald Natter



## FLOWERS AT CO-OP CORNER

The Parish Council has successfully applied to the ERYC Green Fund for a grant. We have been awarded £860 to purchase 2 large environmentally friendly planters and bee-friendly plants to fill them. Watch out for them at Co-op corner (the corner of Eastgate and Galegate). In doing this, we seek to improve the appearance of this unused land, make a small but valuable contribution to improving the environment and meet requests from residents for more flowers and plants in the village. This will be just the start of an initiative to improve this area. The new bench that is already there is made from recycled plastic. It is maintenance free. Over the years to come we intend to replace the village's benches with these environmentally friendly alternatives. This will also save money in the long term.

## NO TRAINING NEEDED TO USE A DEFIBRILLATOR TO SAVE A LIFE

Newbald has two Community Public Access (Automated External) Defibrillators, (CPADs), one in the former phone box, on The Green and another on the outside wall of the Rockar offices, in Monckton Court, South Newbald. They can help people having a cardiac arrest.

The CPADs can be accessed in an emergency, 24 hours of every day, by anyone, using the following instructions:-

- ☐ Dial 999 from any phone, or alternatively 112 from a mobile phone, and ask for an ambulance;
- ☐ If you are within 600m of one of the CPADs, you will be alerted and asked "is there someone with you who can go and get it?"
- ☐ You will also be given a code, to open the yellow cabinet;
- ☐ Someone must stay with the patient and start administering CPR (Cardio-pulmonary resuscitation);
- ☐ Therefore, to access the defibrillator you would need someone else with you;
- ☐ If you are on your own, you will be advised to stay with the patient and start CPR, without delay;
- ☐ After retrieving the defibrillator, or if you are on your own with the patient, you will be guided through CPR and the defibrillator's use by an Emergency Call Handler.

As soon as possible, you will be joined by trained emergency personnel from Yorkshire Ambulance Service, (maybe initially one of the local CFRs), who will take over from you immediately, and may appreciate you staying at the scene, in case you can assist.

Please be assured that you can make an immediate difference to the patient's chances of a full recovery, if you follow this process. You do not need to be specially trained. You will be supported throughout by the Emergency Call Handler.



## Newbald Village Hall

[www.newbald.com/village-hall](http://www.newbald.com/village-hall)

We are seeing the light at the end of a tunnel that has lasted three years! The new community room extension along with new entrance, office and storage areas will be completed apart from minor snagging by the time you read this. In fact, we have already had groups using the Community Room for a variety of activities and new groups and classes will be starting in the near future - keep an eye on our facebook page and the Nextdoor Newbald website! If you want to use Newbald Village Hall please check our webpage: [www.newbald.com/village-hall](http://www.newbald.com/village-hall) where you see availability and book online, phone our bookings clerk, Debbie Tomlinson on 01430 827193 or email: [newbald.hall@gmail.com](mailto:newbald.hall@gmail.com).

We have been informed that some of the trees alongside the car park are past their sell-by-date and could prove a safety hazard so we will have to consider some (and I can assure you as little as possible) tree thinning.

Your committee are investigating the possible need for a hearing loop in the Community Room, to improve facilities for the hearing impaired, and if you have any comments or experiences that could make our decision easier please let Jenni know on 07952 951255 or e mail:

[jennieastgate@outlook.com](mailto:jennieastgate@outlook.com)

We are still keen to start up a **Table Tennis Club** with regular or ad-hoc meetings - possibly on a Sunday? This needs someone keen to organise it - are you that person? Please get in touch!

The same goes for a **film club** - maybe three or four show times during the autumn/winter - perhaps you could assist? To get us started we are showing 'On the Basis of Sex' on Sunday October 27 in the new Community Room using our new projector ... Just let us know if you could help and choose the film you want! Thank you for your support.

Jenni Howard (Chair)

## Live Music

We have a busy 3 months coming up with some fantastic live music from the UK, Ireland and USA - all tickets online - links at

[www.newbald.com/music](http://www.newbald.com/music)

**Fri 13<sup>th</sup> Sept, 8pm**

**Megan O'Neill & Jake Morrell**

(Joint headline

show) - From Ireland and England, two of the most promising talents from this side of Nashville on one bill! **Tickets: £11**

**Fri 4<sup>th</sup> Oct, 7.30pm**

**Sam Outlaw** (With Lydia Luce) From California, now based in Nashville, Sam is



probably the biggest name from North

America to grace the stage of the Village Hall - get your tickets before they sell-out

(online only: £15+bf).

**Fri 18<sup>th</sup> Oct, 8pm**

**Edwina Hayes** Very well known in her native Yorkshire and across the UK, Edwina has been described as having the "sweetest voice in England" - with a massive range of original songs and covers presented with a charming manner and lovely sense of humour. This will be great fun! **Tickets £11** (no fees)

**Fri 15<sup>th</sup> Nov, 8pm**

**Hattie Briggs** (Almost Sold OUT!) Only a handful of tickets left for for Hattie's first performance in Yorkshire since opening for Alfie Boe in venues such as Harrogate International Centre and the Royal Albert Hall and her recent live session on BBC Radio 2.



**Sunday 27<sup>th</sup> Oct 5pm**

**Film Evening: "On The Basis of Sex" (12A)**

An inspiring true story of one couple's fight to overturn a century of discrimination.

**Tickets: £11** (no fees)

**Fri 13<sup>th</sup> Dec, 8pm**

**Danni Nicholls** The release of her third album, Melted Morning has cemented Danni's reputation as a British performer who can hold her own alongside Nashville's finest. Don't miss her only Yorkshire show of the year.

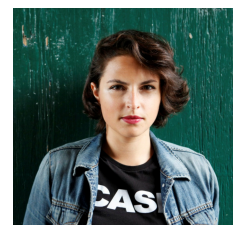
**Tickets: £11** (no fees)

**Tues**

**17<sup>th</sup> Dec 7.30pm**

**"Mr Mercury & Break Free" - Queen tribute** One of the best

celebrators of Freddie Mercury and Queen you will see - Another show heading rapidly towards a sell-out (**Tickets online only: £10+bf**)



## LICENSING ACT 2003 - PUBLIC NOTICE OF APPLICATION IN A LOCAL NEWSPAPER APPLICATION FOR A PREMISES LICENCE (Section 17)

**Name of Applicant:** Newbald Village Hall Management Committee  
Postal address of premises or club premises including post code:  
Newbald Village Hall, Townside Road, North Newbald, York, YO43 4SL.

**Statement of Relevant Licensable Activities or Relevant Qualifying Club Activities, which it is proposed, will be carried on, on or from the premises.**

- a. The sale of alcohol for consumption on the premises between the hours below:

Monday:	11:00 - 23:00	Tuesday:	11:00 - 23:00
Wednesday:	11:00 - 23:00	Thursday:	11:00 - 23:00
Friday:	11:00 - 23:00	Saturday:	11:00 - 23:00
Sunday:	11:00 - 23:00		

The Licensing Register may be inspected at the Licensing Authority, East Riding of Yorkshire Council, Public Protection Department, County Hall, Beverley, East Riding of Yorkshire, HU17 9BA between 9.00 am and 5.00 p.m.- Monday to Thursday (4.30p.m on Fridays) except public holidays or on the below link:

<http://www2.eastriding.gov.uk/business/licences-and-registrations/public-registers/alcohol-entertainment-and-food/>

Any representations by a **Responsible Authority** or **Relevant Person** must be made in writing to:

**Licensing Authority, East Riding of Yorkshire Council, Cross Street, Beverley, HU17 9BA, by 20<sup>th</sup> September 2019**

It is an offence knowingly or recklessly to make a false statement in connection with an application punishable on summary conviction to an unlimited fine.

## Other Events

**Sunday 13<sup>th</sup> Oct, 6pm**

**Quiz Night** - Team of 4, Jackpot prize approx £60 - Full details announced soon!

## NEW NEWBALD GIRL BAND



FLO & RUBY  
PERFORM AT  
THE GALA

Newbald teenagers Flo and Ruby took the 2019 gala by storm with their performance. The up and coming artistes will be entertaining again at Beverley Youth Festival, Beverley Rugby Club on **Wednesday 28th August, 12.30-15.30**.

## COMMUNITY BUS SERVICE



The new subsidised community bus service, designed to help rurally isolated people get out and about, is available for anyone to take

advantage of. Beverley Community Lift is running monthly services to particular destinations directly from Newbald. The next trip will be to Gilberdyke on **Tuesday 3rd September**. Other destinations in the pipeline include Hornsea Garden Centre and York for Christmas shopping. If you are interested in using the service, you need to register first by completing a form. For further information and to download a form, please visit [www.newbald.com](http://www.newbald.com). Alternatively, you can call Beverley Community Lift on 01482 868082. The uptake for this service so far has been poor; please make the most of it, so we can secure this service for the future.

## SOBER FUND RE-OPENS

The next deadline for receipt of applications to the Sober Hill Wind Farm Community Benefit Fund is **Monday 18th November 2019**. NPC invites applications for any good causes or projects which will benefit the residents of Newbald. The applications will be considered by NPC at its meeting on Monday 2nd December. In some cases, a decision may not be made until January. For further details about the fund and to download an application form, please visit [www.newbald.com](http://www.newbald.com).

## WWW.NEWBALD.COM



### Parish Council Meeting Dates

Mon 2 September 2019 – Village Hall  
Mon 7 October 2019 – Village Hall  
Mon 4 November 2019 - Village Hall  
Mon 2 December 2019 - Village Hall  
Meetings are preceded by an Open Forum at 7.30pm at which parishioners are welcome to come along and talk about any local issue. Agendas are published on [www.newbald.com](http://www.newbald.com).

### OFFICE CONTACT

Suzanne Smith  
Clerk to the Council  
01423 543985  
[clerk@newbald.com](mailto:clerk@newbald.com)  
[Facebook.com/newbaldpc](https://www.facebook.com/newbaldpc)  
[@newbaldvillage](https://www.instagram.com/newbaldvillage)

### NPC COUNCILLORS

John Barrett	827662	Geoff Lewis	801128
Michael Bushby	07483860074	Sarah Milner	827961
Becky Clarke	N/A	Ed Openshaw	827589
Simon Dongray-Burke	828568	Becky O'Sullivan	827175
John Howard	828932	Beverley Smith	827153
		Gavin Steward	801174

## DATES FOR YOUR DIARY

Sep 12 <sup>th</sup>	Thu	Newbald Natter - Village Hall - 1.30-3pm - Flower arranging
Sep 13 <sup>th</sup>	Fri	Megan O'Neill & Jake Morrell - Village Hall - 8pm - Live music
Oct 4 <sup>th</sup>	Fri	Sam Outlaw with Lydia Luce - Village Hall - 7pm - Live music
Oct 10 <sup>th</sup>	Thu	Newbald Natter - Village Hall - 1.30-3pm - movie
Oct 18 <sup>th</sup>	Fri	Edwina Hayes - Village Hall - 8pm - Live music
Oct 20 <sup>th</sup>	Sun	Apple Festival - Church Rooms - tbc
Nov 14 <sup>th</sup>	Thu	Newbald Natter - Village Hall - 1.30-3pm - board games
Nov 15 <sup>th</sup>	Fri	Hattie Briggs - Village Hall - 8pm - Live music
Nov 24 <sup>th</sup>	Sun	Christmas Fair - Church Rooms - tbc

See the constantly updated events calendar at [www.newbald.com/calendar](http://www.newbald.com/calendar)

## GALA IS A ROARING SUNNY SUCCESS



The NPFA would like to give a big thank you to everyone who attended the Gala in June – it was a fabulous day and was very successful. We really couldn't continue without the fantastic support we receive from our village and surrounding communities. We have already set a date for next year's gala – it will be held on **Saturday 13th June 2020** so please save the date! Whilst on this subject, we would like to put together a list of volunteers who we could count on to help for the gala weekend. As you can appreciate, we are a



TUG OF WAR AT 2019  
NEWBALD GALA

small committee and sometimes struggle for help setting up and on the day. So if you feel you could give your time for the day or a few hours of the weekend, it would be much appreciated. Please contact any of the current committee members directly or through the Newbald website.

Three pupils from the village school have set up a lifestyle group and they are arranging a competition in the school for children to produce some artwork which would be judged by the lifestyle group and an NPFA committee member. The two winning designs will then be painted onto the mini football boards – we think you will agree this is a very worthwhile cause.

Lastly if anyone has any ideas for fund raising for the NPFA, again please contact us or even join us – we are a very informal group of people who just want to keep our park open.

## NEWBALD WI FUN ACTIVITIES

WI members had a fabulous day out at The RHS Chatsworth Flower Show in June and enjoyed their usual Annual BBQ. The weather was perfect, which helped a lot.

We helped by serving tea and cake at the Village Gala and sent a noteworthy contribution to the Playing Field funds. August sees our Village Walk finishing at The Tiger for refreshments. We start our Autumn programme in the fabulous refurbished Village Hall on **September 11th** (7pm). A representative from Beverley Beekeepers will be telling us about the sweets and the stings of Beekeeping. New members & visitors are welcome.

## NEW BOWLING SEASON

The Thursday night bowling season will resume again on **19th September 7-9pm**, Village Hall. New members welcome.

Visit [www.newbald.com](http://www.newbald.com) for Newbald news, events and information